

VALCam USB For New Mexico Tax and Revenue

Introduction

Thanks for purchasing the **VALCam USB**, the first image acquisition system designed specifically for photo-ID and visual database applications. All camera controls (pan, tilt, zoom and exposure level) are available from the mouse or keyboard. Manual positioning of the camera is eliminated for increased operator efficiency.

The **VALCam Professional** also includes **One Click Auto Centering**. Double click on the subject's nose and the camera will immediately center itself in under a second.

In addition to hands off control, the **VALCam USB** provides a synchronized photoflash for consistent high quality image acquisition in any environment. Software controls are provided for flash intensity and flesh tone adjustments making the acquisition of top quality images a snap. High quality captures with perfect skin tones and exposure can be obtained effortlessly in any environment, even dark rooms!



Video Associates Labs, Inc.
2201 Denton Dr., Suite 109B
Austin, TX 78758
1-800-331-0547
www.VAL.com

Features Include:

- **One Click Auto Centering on USB Professional**
- **Complete SDK available on request**
- **Complete USB hardware interface**
The only connection to the computer is a USB cable
- **Mouse control of pan, tilt, zoom and exposure in Pan/Tilt/Zoom version. Zoom in/out for the Zoom version.**
- **Uses optical pan, tilt, zoom for highest resolution.**
- **Synchronized photoflash with software control of flash exposure and flesh tones. Perfect captures even in dark rooms.**
- **Hassle free integration of photoflash.**
- **Includes 32 Bit Twain Driver. Optional Software Developers Kit available.**
- **Will work in all major Windows photo ID and imaging applications.**
- **High-resolution single chip CCD array (796x494).**
- **Auto Focus, S-video output.**
- **Available in both NTSC and PAL video standards.**

Quick start instructions for hardware and software installation are provided. A trouble-shooting guide will help resolve any installation and operational problems. The **Imaging Hints and Tips** section will help the end user achieve high quality captures.

If technical support is needed please contact:
Video Associates Labs, Inc.
Phone: 800-331-0547

Parts List for available VALCam products:

8500-630 VALCam Pro with Flash

High resolution Pan/Tilt/Zoom Camera
External USB interface box
Multi-cable interconnect
Hi Intensity Photo-Flash
Universal mounting bracket for flash
USB cable
4 Port USB Hub
Brick power supply for USB interface box
Instruction Manual
Installation Disk



Installing the VALCam USB Pan/Tilt/Zoom

1. Do **not** connect the camera to the computer until after software installation.
2. Screw the tripod mounting shoe (this is may be removeable from the tripod) to the screw hole at the back of the flash mounting bracket w.
3. Attach the flash-mounting bracket to the tripod . Use the knob on the bottom of the flash bracket to attach the camera..
4. Attach the photoflash to the hot-shoe connector on the flash bracket.
5. Locate the camera multi-cable.
6. Connect the **brown** S-video connector on the multi-cable to the matching S-Video connector on the camera. Verify that the connector is properly oriented and gently insert the connector. Do not force the connection.
7. Connect the **red** Visca connector to the matching **red** connector on the camera.
8. Connect the **yellow** power connector to the matching **yellow** connector on the camera.
9. Connect the 25-pin connector on the multi-connector to the USB converter box
10. Connect the power supply to the USB converter box

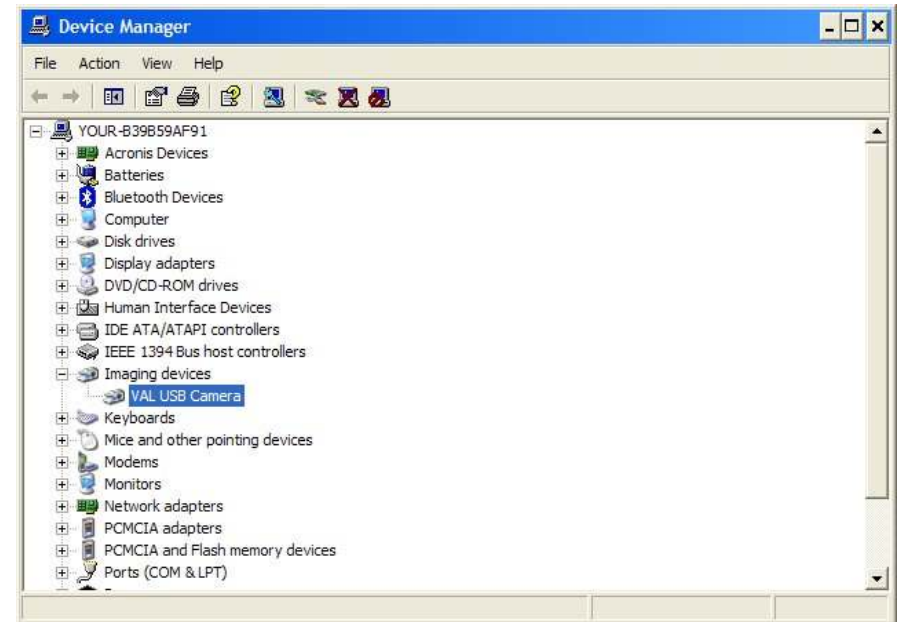


11. Connect the USB cable to the converter box. Do not connect the other end of the USB cable to the computer.

11. If desired the external USB converter can be removed from the flash bracket. An extended 10 ft cable is available from Video Associates.

Final Installation for Win XP and Win 2000

1. Run the camera software provided by New Mexico Tax & Revenue IT personal.
2. Verify that the camera is configured as described above. Make sure the power supply is connected and plugged in to a wall outlet.
3. Verify that the USB cable from the converter box is attached. Plug the USB cable to your computer USB port.
4. The computer will find new hardware and install the device. Answer **Yes** or **Continue** if you are queried during the installation.
5. The installation process will install 2 devices before completing. Please verify that both processes are run. Both installation process will need to be completed before camera can be used.
6. You can confirm proper installation by opening Device Manager and noting that the **VALCam USB Camera** is listed under “**Imaging Devices**”. If this entry is not found or error indicators appear the camera will not function properly. See image on next page.



NOTE: When upgrading software ALWAYS UNPLUG THE POWER SUPPLY CONNECTOR before installing the new software. Plug in the Power Supply Connector after the software upgrade is installed. Camera firmware will not be upgraded unless this procedure is followed.

Verification of Operation:

1. Verify that preceding installation instructions have been followed.
2. Verify that “VAL USB Camera” is listed in Device Manager as described in proceeding section.
3. Run “**New Mexico Camera Calibrate.exe**”.
This utility will check for proper camera operation and also provides facility for calibrating camera parameters. This utility has separate documentation for proper usage. Once this utility is run the camera is properly calibrated and ready for use.

Troubling Shooting

Camera is not listed in Device Manager:

1. Unplug power to “USB Camera Electronics”
2. Reinstall software
3. Reattach power tie “USB Camera Electronics”
4. Check to see if “VAL USB Camera” is listed in Device Manager.
5. If camera is not listed locate and erroneous listing in Device manager.
This listing will have an “error indicator” next to the device.
6. Right click on the erroneous device, select properties and select reinstall software.
7. Reboot computer.
8. Device should now be listed and ready for use. If device is still not listed see instruction for removing device from registry.

Image is inverted:

Set “Image Flip” switch on back of camera to off position.
Power cycle the camera.

Capture image is too dark or too bright

Refer to **Suggestion for Optimal Usage**.

Clearing Device from the Registry

This procedure should only be used if the camera is not listed in Device Manager after all attempts at correction have failed. This procedure puts the computer in a state as if the camera software has never been installed.

1. Start **RegEdit**.
2. Navigate to “**HKey Local Machine-> System->Current Control Set->Enum-> USB**”.
3. Delete ALL entries with **VID_1575 ****** prefix. Note that you will need administrative rights and need to set full control to delete entries.
4. Reset power to the camera external USB box.
5. The computer will detect and install software for the camera system.

Suggestions for optimal usage of the cameras system.

1. Verify proper zoom setting. **New Mexico Camera Calibrate.exe** utility can automatically set zoom
2. Verify optimal “**Flash Iris**” setting. This setting can also be adjusted in “**New Mexico Calibrate.exe**” If this control is not set properly captured image will either be too bright or too dark.
3. Colors for both flash and non flash captures can also be set with “**New Mexico Calibrate.exe**”
4. Use the Left Mouse Double Click to center subject by placing cursor on nose and double clicking. Using this method will result in faster and more consistent operation than using the camera motion controls.

